

Are you receiving the best cross-border, intermodal experience between the U.S. and Mexico?

Union Pacific customers are.

Union Pacific offers unmatched market access and transit times connecting major North American markets via rail. We provide the capacity, the service and the expertise to get intermodal shipments safely — and quickly — across the border.

Intermodal Expertise



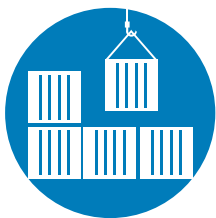
- Union Pacific **moves more product** between the U.S. and Mexico than all of our rail competitors combined
- Union Pacific has operations personnel at **every major public intermodal terminal** in Mexico
- Our **relationships with key customs personnel** simplify the customs process
- Union Pacific customers get **bilingual support** from a team with decades of experience

Premier Service



- Union Pacific is the only rail provider **with inbound and outbound rail service** at both Laredo and El Paso
- We offer the **most direct route** between Mexico and Chicago and Mexico and the West Coast
- Union Pacific's Mexico Direct service is offered **six days per week** vs. our closest competitor's five days per week
- Published transit schedules are at least **12 hours faster** than our nearest competitor in most lanes

Superior Capacity



- Union Pacific has access to the **largest dedicated container fleet** with more than 80,000 rail containers between Union Pacific and our partners
- We have exported more than **3,000 UP-owned chassis** to Mexico since 2014
- We've **invested more than \$1.6B** in intermodal facilities over the past 15 years
- Our Mutual Commitment Program provides shippers with **year-round capacity, stable pricing and surge allowances**

Reach more Mexico markets — and reach them faster — when you ship with Union Pacific. Contact your Union Pacific representative to get started on your intermodal solution.

Unmatched Intermodal Service Across the Border

If **service** is at the top of your list, Union Pacific delivers.

- Union Pacific has **equivalent or better transit time** and service frequency in ALL lanes of significance between Mexico and the U.S.
- If your shipments are headed to Los Angeles from interior Mexico origins, you can expect them to arrive **at least one day faster** using Union Pacific.
- And if you're wondering where your shipments are, you can **track them 24/7**.

Union Pacific vs. Rail Competition*

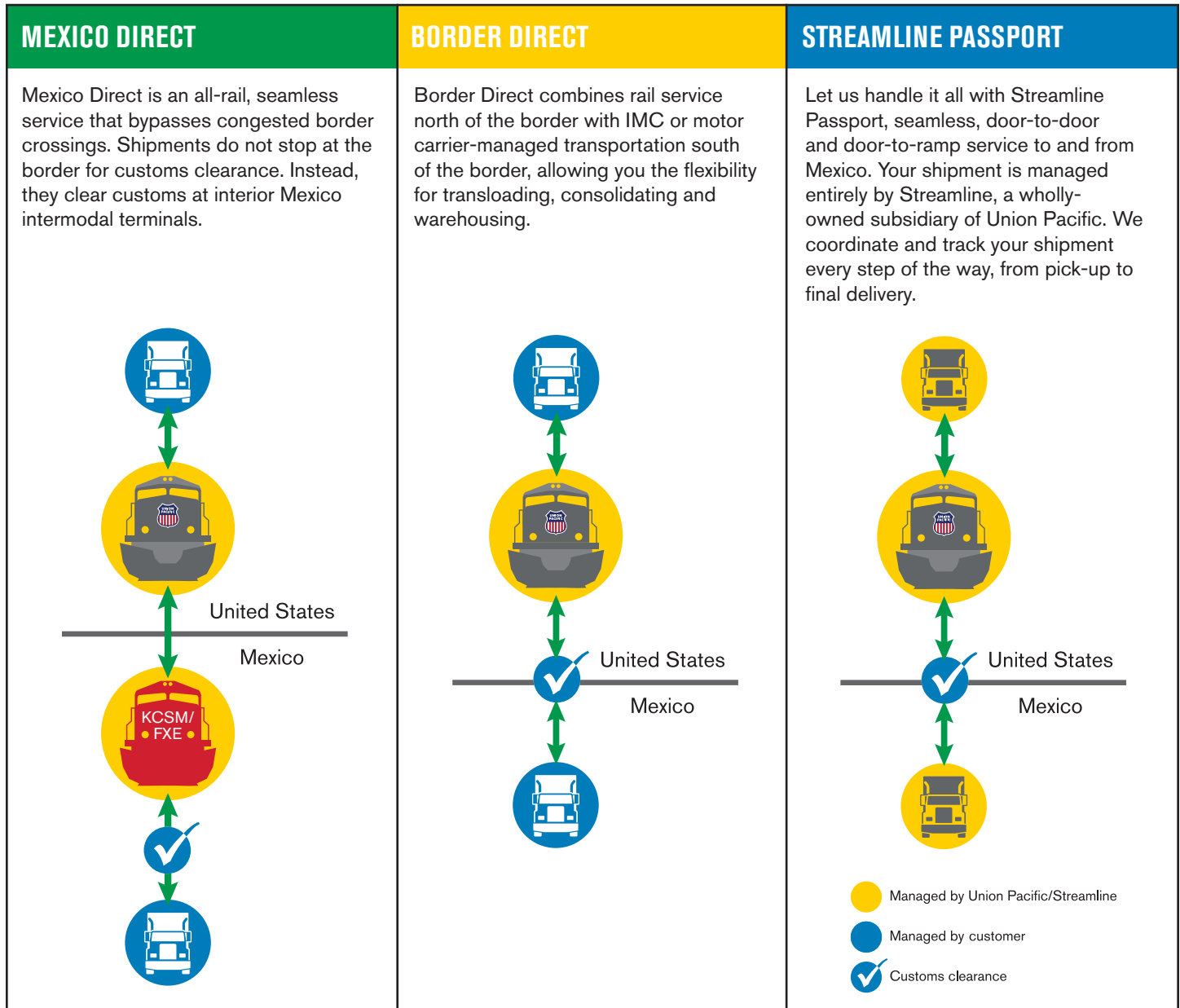
Lane	Transit Time	Service Frequency
Mexico to Chicago	=	+
Chicago to Mexico	+	+
Port Laredo to Chicago	+	+
Chicago to Port Laredo	+	+
Port Laredo to Memphis	+	+
Memphis to Port Laredo	+	+
El Paso to Chicago	+	+
Chicago to El Paso	+	=
Mexico to Los Angeles	+	+
Port Laredo to Los Angeles	+	+

- +** Union Pacific is better by 12 hours or 1 day
- =** Union Pacific is equal to the nearest rail competitor

* Comparison based on published standard service schedules



Three Ways In and Out of Mexico



Mexico Direct

Mexico Direct routes include:

- Chicago to/from Silao, Monterrey, San Luis Potosi, Toluca and Mexico City
- Memphis to/from Silao
- Los Angeles from Monterrey, San Luis Potosi, Mexico City and Toluca
- Monterrey to Seattle
- Interline service to/from Canada and the eastern U.S. via Chicago

Border Direct

Border Direct routes include:

- Chicago to/from Port Laredo and El Paso
- Los Angeles to/from Port Laredo and El Paso
- Memphis to/from Port Laredo
- Houston and Lathrop to El Paso
- Interline service to/from Canada and the eastern U.S.

Streamline Passport

Streamline Passport routes include:

- Northbound and Southbound service
 - Midwest (Chicago)
 - West Coast (LA, POR, SEA)
 - Northeast
 - Canada
- Northbound service to the Southeast

Learn More. Contact your Union Pacific representative to get started on your intermodal solution.