

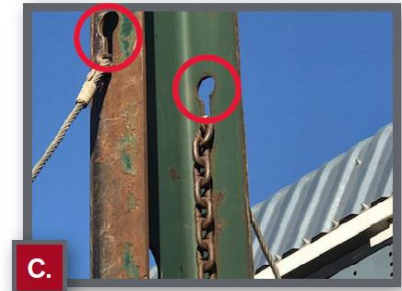
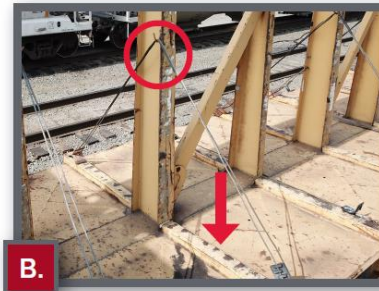
Centerbeam Cable Securement Guidance



Following the techniques below for centerbeam cable securement is a critical safety measure that ensures delivery of safe equipment for all shippers.

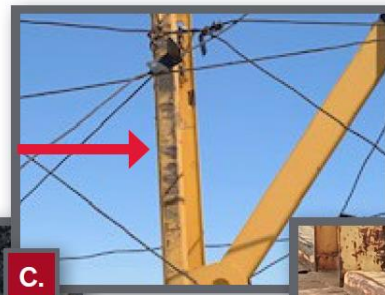
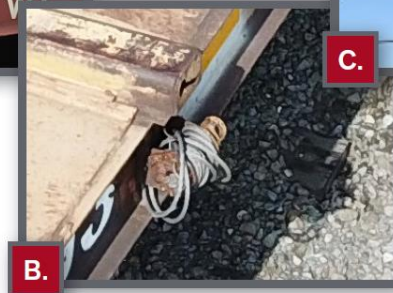
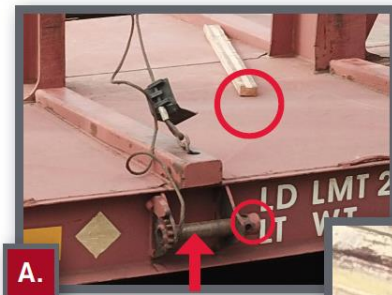
Proper Technique Options

- A. Engage cable chain lengths in keyhole slots on same side as winch. Attach cables to centerbeam posts' cable hangers, take up slack on winch drum.
- B. Attach cable chain to keyhole slot on opposite side of car or hook on car side riser using cable hanger to support.
- C. Insert chain into centerbeam upright's keyhole slot and tighten down cable on drum. One cable per keyhole slot allowed.



Improper Techniques

- A. Loose cables are not acceptable; engage ratchet pawl to take up slack on winch drum. Remove loose dunnage.
- B. Cable should not be wound completely on winch and over itself; this causes excess wear.
- C. Cables should not be wound around centerbeam uprights.
- D. Cables should not be secured horizontally. Use proper appliances (J hook, keyhole slots) to secure cables vertically.



This guidance is provided only for informational purposes and the photographs are intended only as illustrative examples. Refer to the AAR Open Top Loading Rules, including Section 1, General Rule 22.4.3, for applicable requirements.