



# UNIVERSITY OF NEBRASKA AT OMAHA DODGE CAMPUS PARKING MAP

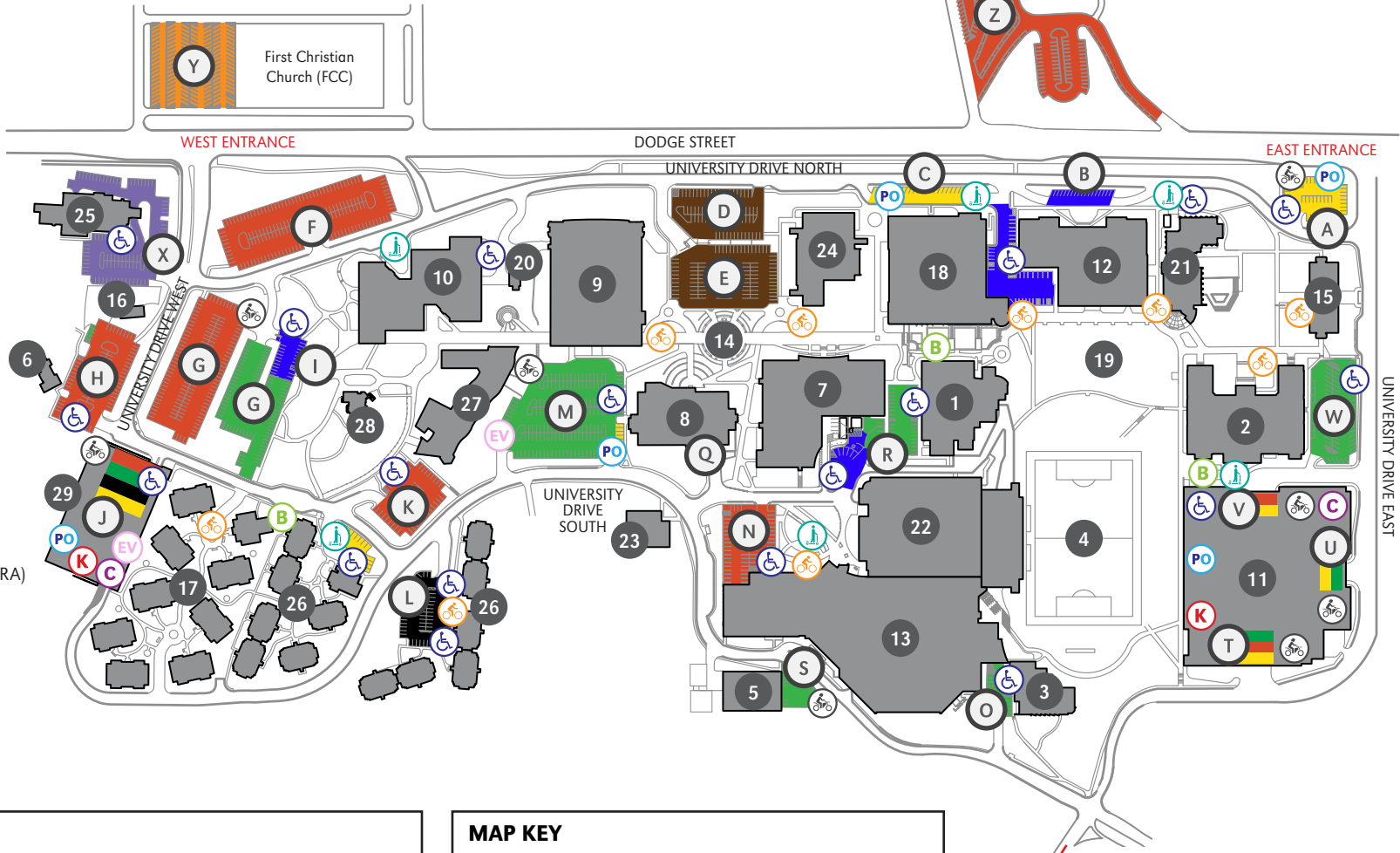
402.554.2800 | unomaha.edu

UPDATED 04-18-19



## BUILDING KEY

- 1 Allwine Hall (AH)
- 2 Arts & Sciences Hall (ASH)
- 3 Biomechanics Research Building (BRB)
- 4 Caniglia Field (CF)
- 5 Central Utilities Plant (CUP)
- 6 Child Care Center (CCC)
- 7 College of Public Affairs & Community Service (CPACS)
- 8 Barbara Weitz Community Engagement Center (Weitz CEC)
- 9 Criss Library (CL)
- 10 Durham Science Center (DSC)
- 11 East Parking Garage (EPG)
  - Lot T - Lower Level
  - Lot U - Middle Level
  - Lot V - Upper Level
- 12 Eppley Administration Building (EAB)
- 13 Health & Kinesiology Building (H&K)
- 14 Henningson Memorial Campanile (HMC) (clock tower)
- 15 Kayser Hall (KH)
- 16 Landscape Services (LS)
- 17 Maverick Village (MV)
- 18 Milo Bail Student Center (MBSC)
- 19 Pep Bowl (open space)
- 20 Resource Conservation & Recovery Area (RCRA)
- 21 Roskens Hall (RH)
- 22 Sapp Fieldhouse (SFH)
- 23 Sculpture & Ceramics Studio (SCS)
- 24 Strauss Performing Arts Center (SPAC)
- 25 Thompson Alumni Center (TAC)
- 26 University Village (UV)
- 27 Weber Fine Arts Building (WFAB)
- 28 6533 University Drive South (WC)
- 29 West Parking Garage (WPG)



## PARKING KEY

STUDENT	FACULTY
F/S/S SURFACE PERMITS	VISITOR (NO UNO)
RESERVED	CEC VISITOR
EVENT PARKING	MV/UV RESIDENT

## PERMITS REQUIRED

**Faculty/Staff/Stud.**  
**Surface Lots:**  
 7 A.M. to 7 P.M. (M-TH)  
 7 A.M. to 5 P.M. (F)

**Garages:**  
 7 A.M. to 7 P.M. (M-TH)

*\* Parking permit types are assigned to specific surface lots, garages, and/or garage levels. It is the responsibility of the permit holder to know which designated areas their permit is valid in.*

## MAP KEY

- Handicap Parking
- Motorcycle Parking
- Park Omaha
- Bicycle Racks
- Kiosks
- Scooter Drop-off
- Carpool
- B-Cycle Station
- EV Charging Station

TO SCOTT CAMPUS (0.75 MILES)  
 18 MIN WALK | 5 MIN BIKE

UNIVERSITY OF  
**Nebraska**  
 Omaha

**THIS IS A SMOKE- AND TOBACCO-FREE CAMPUS AS OF 8/22/16**



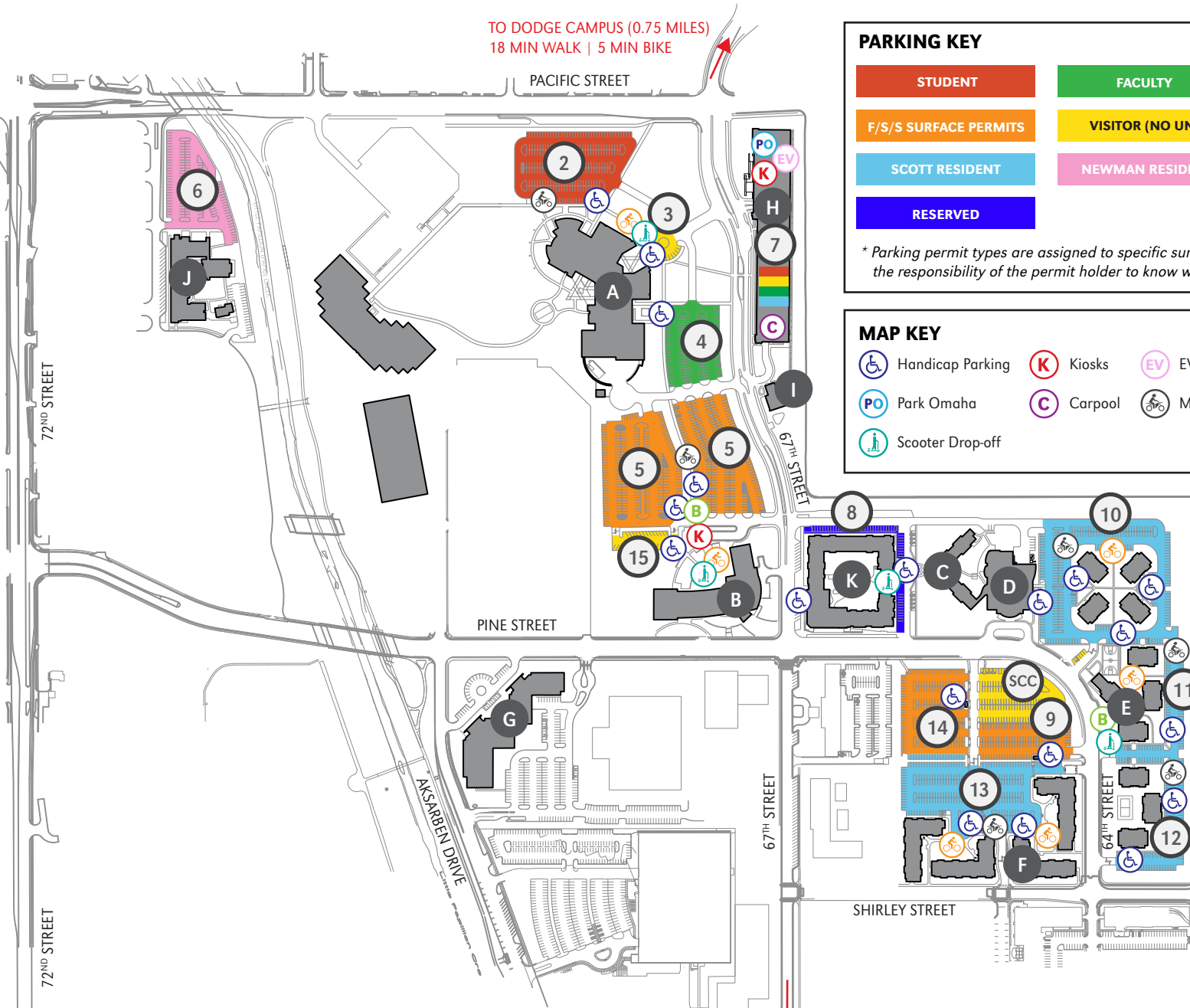
# UNIVERSITY OF NEBRASKA AT OMAHA SCOTT CAMPUS PARKING MAP

402.554.2800 | unomaha.edu

UPDATED 04-18-19



TO DODGE CAMPUS (0.75 MILES)  
18 MIN WALK | 5 MIN BIKE



TO CENTER CAMPUS (0.70 MILES)  
14 MIN WALK | 5 MIN BIKE

## PARKING KEY

STUDENT	FACULTY
F/S/S SURFACE PERMITS	VISITOR (NO UNO)
SCOTT RESIDENT	NEWMAN RESIDENT
RESERVED	

## PERMITS REQUIRED

Faculty/Staff/Stud.  
Surface Lots:  
7 A.M. to 7 P.M. (M-TH)

Garage:  
7 A.M. to 7 P.M. (M-TH)

\* Parking permit types are assigned to specific surface lots, garages, and/or garage levels. It is the responsibility of the permit holder to know which designated areas their permit is valid in.

## MAP KEY

Handicap Parking	Kiosks	EV Charging Station	Bicycle Racks
Park Omaha	Carpool	Motorcycle Parking	B-Cycle Station
Scooter Drop-off			

## BUILDING KEY

- A Peter Kiewit Institute (PKI)
- B Mammel Hall (MH)
- C Scott Residence Hall (SRH)
- D Scott Conference Center (SCC)
- E Scott Village (SV)
- F Scott Court (SC)
- G Scott Technology Center (STC)
- H Pacific Street Garage (PSG)
- I Parking Services (PS)
- J Newman Center (NC)
- K Maverick Landing/Scott Crossing

UNIVERSITY OF  
**Nebraska**  
Omaha

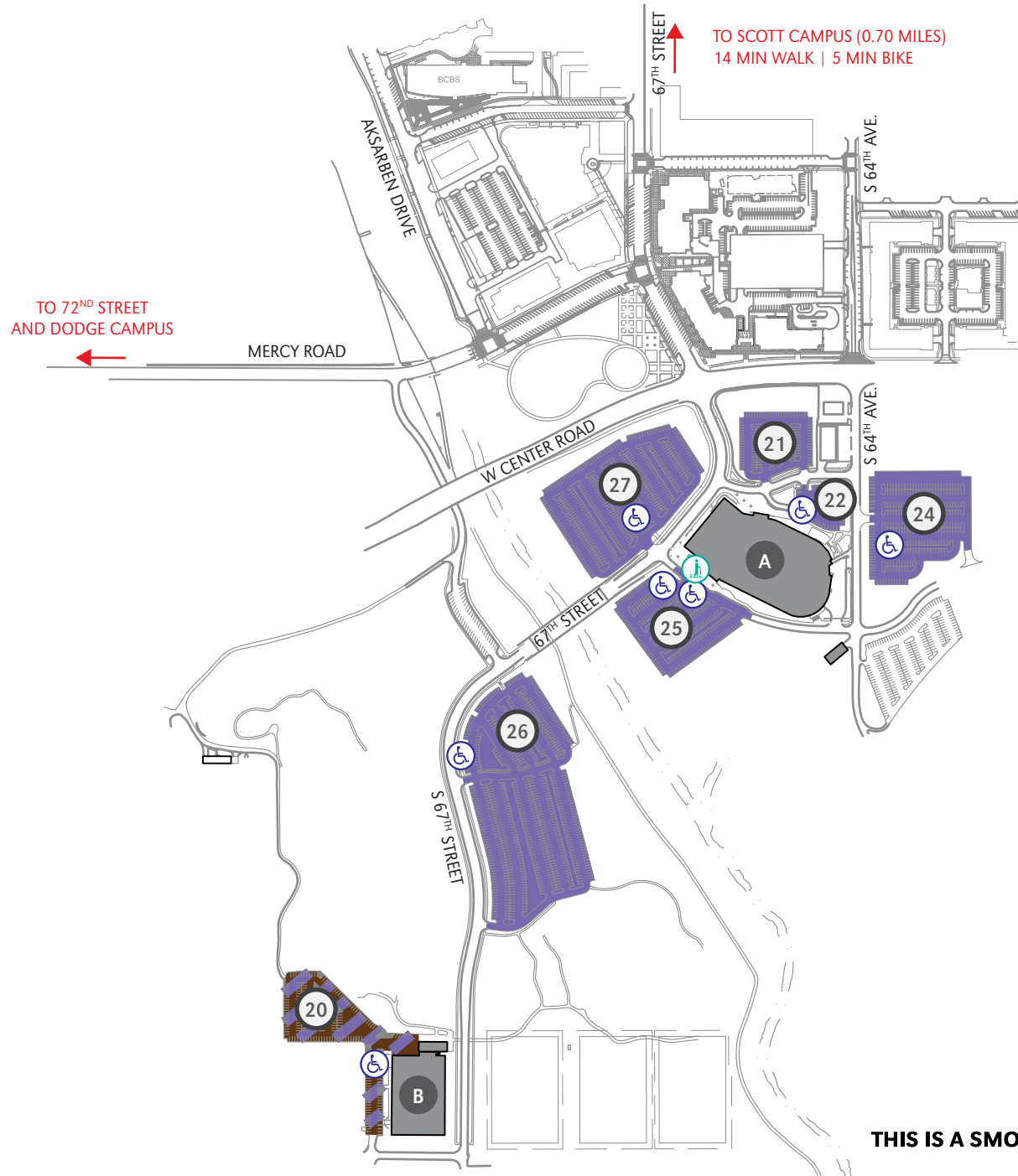
**THIS IS A SMOKE- AND TOBACCO-FREE CAMPUS AS OF 8/22/16**



# UNIVERSITY OF NEBRASKA AT OMAHA CENTER CAMPUS PARKING MAP

402.554.2800 | unomaha.edu

UPDATED 04-18-19



### PARKING KEY

EVENT PARKING

NO PERMITS REQUIRED

\* Parking permit types are assigned to specific surface lots, garages, and/or garage levels. It is the responsibility of the permit holder to know which designated areas their permit is valid in.

### MAP KEY

- Handicap Parking
- Scooter Drop-off

### BUILDING KEY

- A Baxter Arena
- B Center Dome

UNIVERSITY OF  
**Nebraska**  
Omaha

THIS IS A SMOKE- AND TOBACCO-FREE CAMPUS AS OF 8/22/16