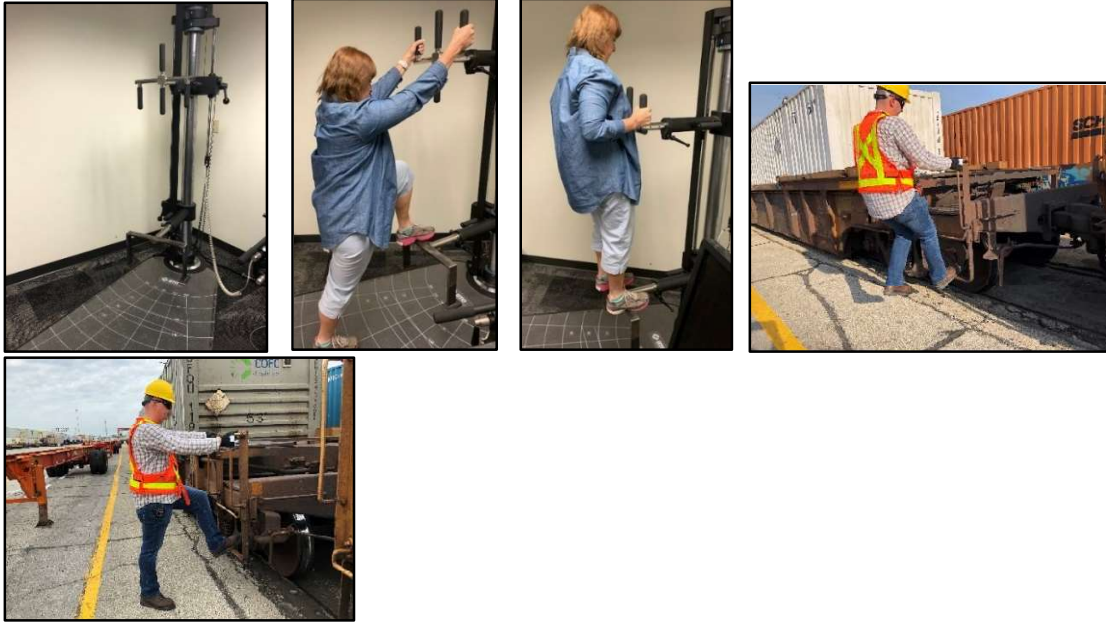


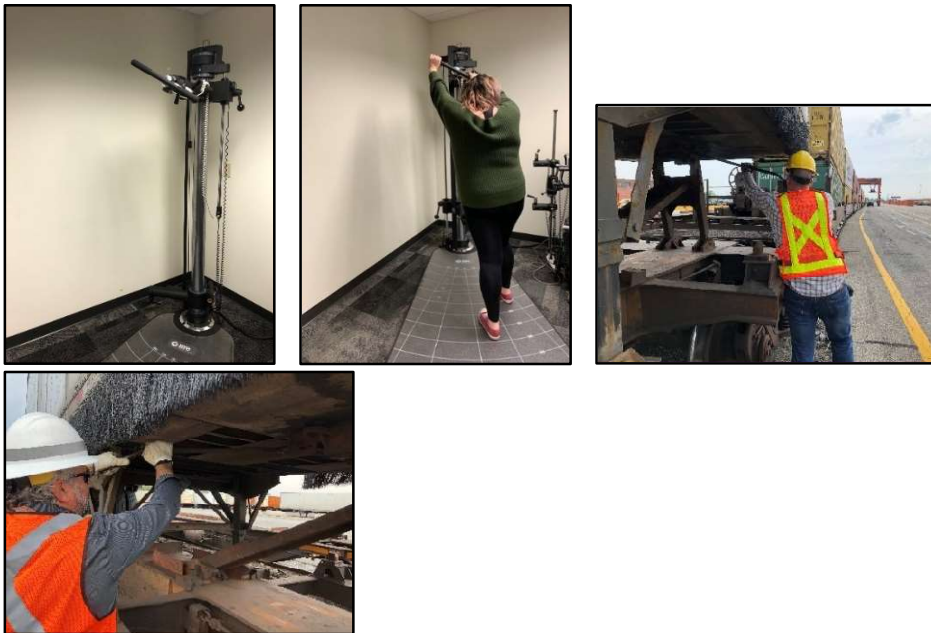
Tie Down Clerk

Neutral Step Up



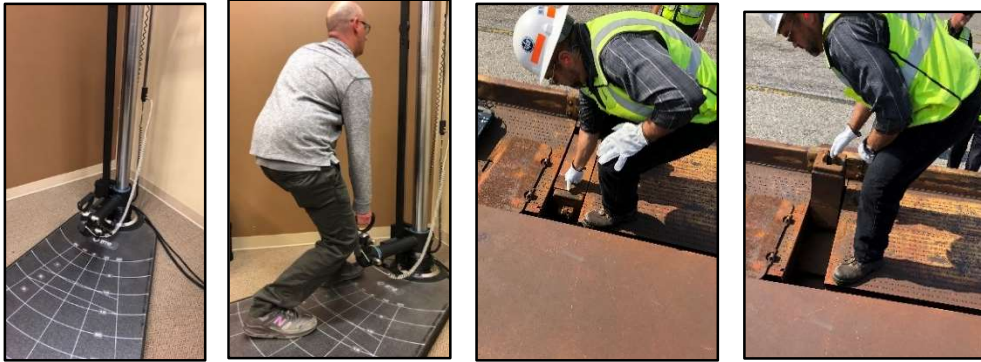
Employees are required to step up and down to access train cars. Applicants must demonstrate the ability to step up onto the step with both feet, alternating between leading with their left foot and leading with their right foot.

Unlock Hitch Pin Push



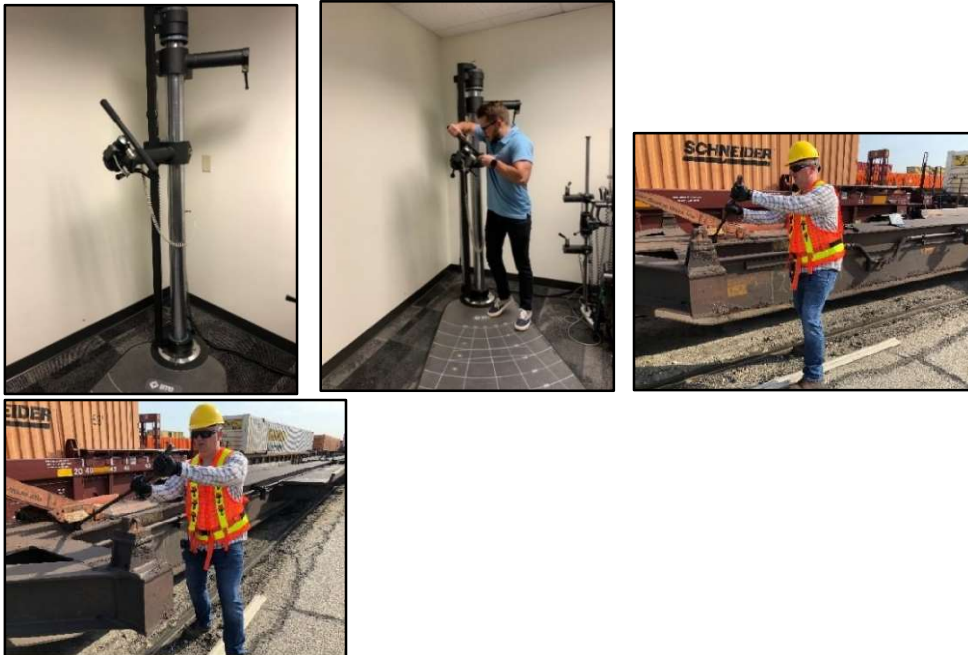
Employees are required to use a cheater bar to unlock a hitch from a trailer. During this test, applicants will push a testing device away from the body to demonstrate the ability to generate the force required to accomplish this task.

Raise Pedestal Pull



Employees are required to flip pedestal covers, which requires squatting down and pulling up on a weighted object. Applicants must demonstrate the ability to crouch down and pull upward on the handle of the apparatus with both hands individually.

Drop Hitch Push



Employees are required to utilize a cheater bar to drop the hitch on a trailer on a flat car. During this test, applicants will push a testing device away from the body to demonstrate the ability to generate the force required to accomplish this task.

IBC Sidestep Bilateral



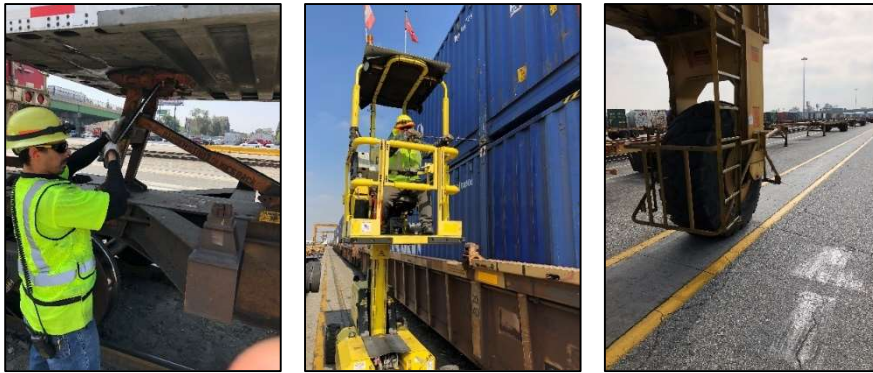
Employees are required to stoop and balance while holding the inter-box connector (IBC) in one hand. Applicants must demonstrate the ability to safely complete this task by picking up the IBC, side stepping across a balance apparatus, and handing the IBC off to the clinician.

Neutral Step Up



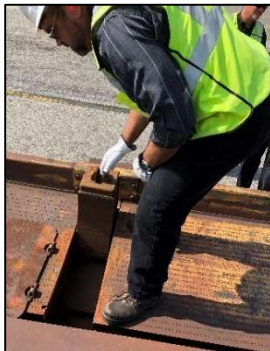
Employees are required to step up and down to access train cars. Applicants must demonstrate the ability to step up onto the step with both feet, alternating between leading with their left foot and leading with their right foot.

FROM MTM Upper Reach - Occ (90)



Employees are required to reach overhead when performing essential functions of the job. They may be required to work with their hands overhead for extended periods of time, with the ability to change position as needed. Applicants must demonstrate their ability to work in this position safely. During this activity, applicants will be asked to move pegs from one panel to the next panel and back for a set number of repetitions.

FROM MTM Stoop - Occ (90)



Employees are required to stoop to perform essential functions of the job. Employees may be required to work in this position for extended periods of time. Applicants must demonstrate the ability to work in this position safely. During this activity, applicants will be asked to move pegs from one panel to the next panel and back for a set number of repetitions.