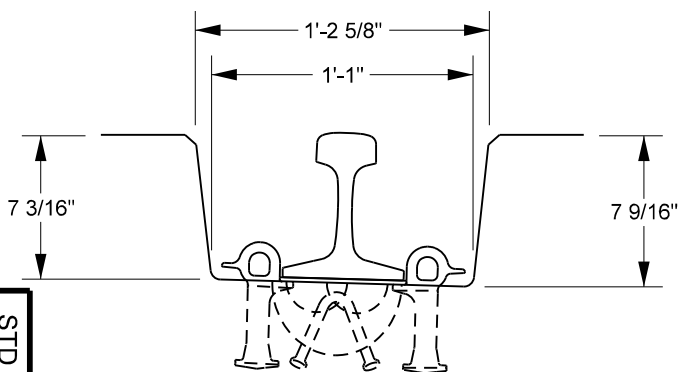
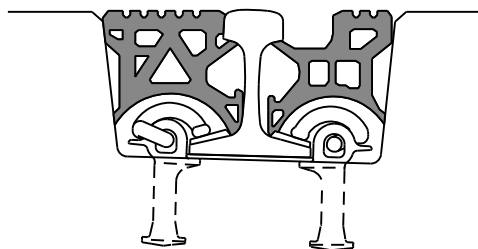


**NOTES:**

1. CONCRETE COMPRESSIVE STRENGTH SHALL BE AS FOLLOWS:  
 @ 28 DAYS = 6000 psi MINIMUM  
 @ SHIPMENT = 4000 psi MINIMUM  
 @ REMOVAL FROM FORMS = 2500 psi MINIMUM
2. ONLY TO BE USED IN CLASS 1 INTERMODAL AND INDUSTRY TRACK WHERE TRAFFIC CONSISTS OF MORE THAN 50 TRUCKS PER DAY.
3. ON WOOD TIES, INSTALL 10 - 10' SWITCH TIES ON EITHER SIDE OF THE CROSSING AS A TRANSITION ZONE.
4. PANEL TO BE ORDERED AS NON-STOCK ITEM.
5. SEE PAGE 2 FOR CROSSING PANEL BASE OPTIONS.



**D-PAN DETAIL**



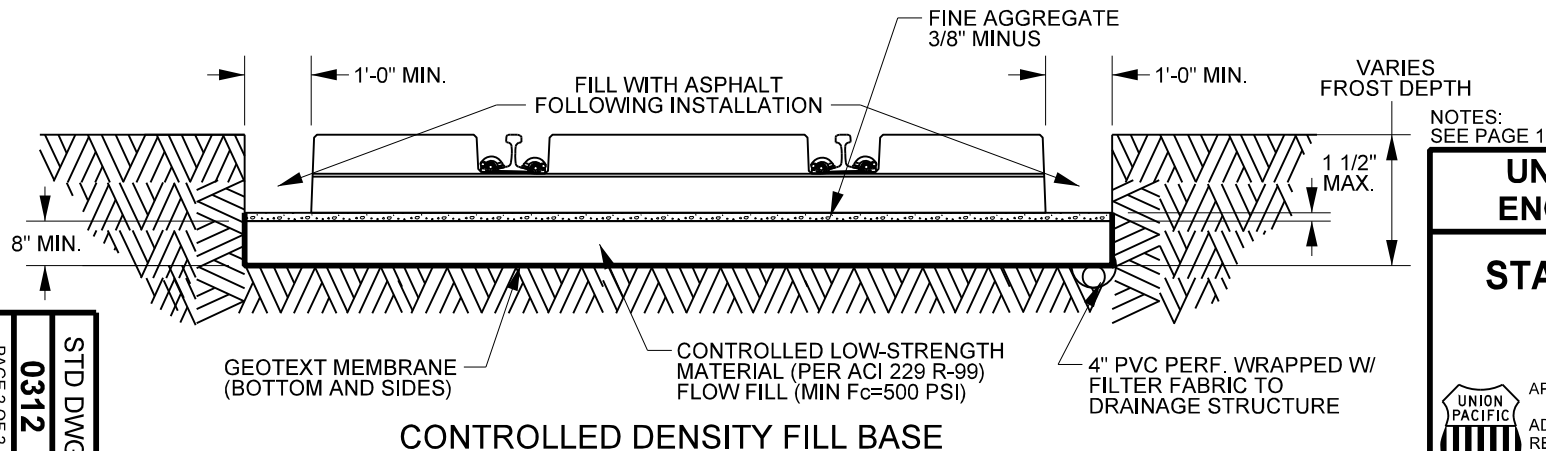
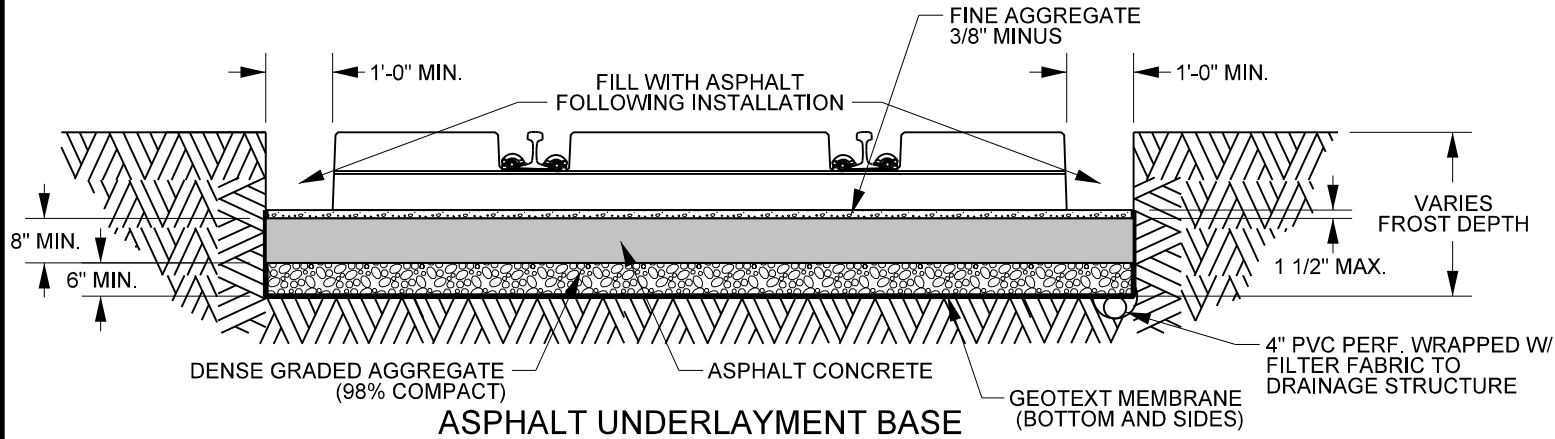
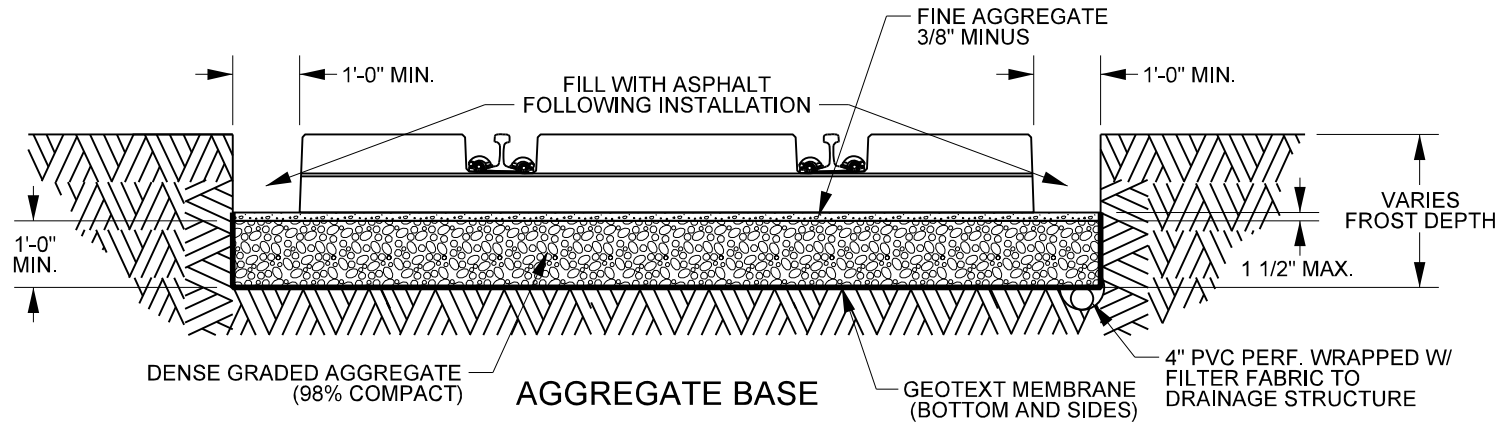
**RUBBER FILLER DETAIL**

**ITEM NO.**  
540-1320



APPROVED: *[Signature]*  
 ADOPTED: APR. 3, 2017  
 REVISED:  
 FILE NO.: 0312

**STD DWG**  
**0312**  
 PAGE 1 OF 2



STD DWG  
0312  
PAGE 2 OF 2

## UNION PACIFIC RAILROAD ENGINEERING STANDARDS

### STARTRACK HEAVY DUTY ROAD CROSSING



APPROVED: *[Signature]*  
ADOPTED: APR. 3, 2017  
REVISED:  
FILE NO.: 0312

STD DWG

0312

PAGE 2 OF 2