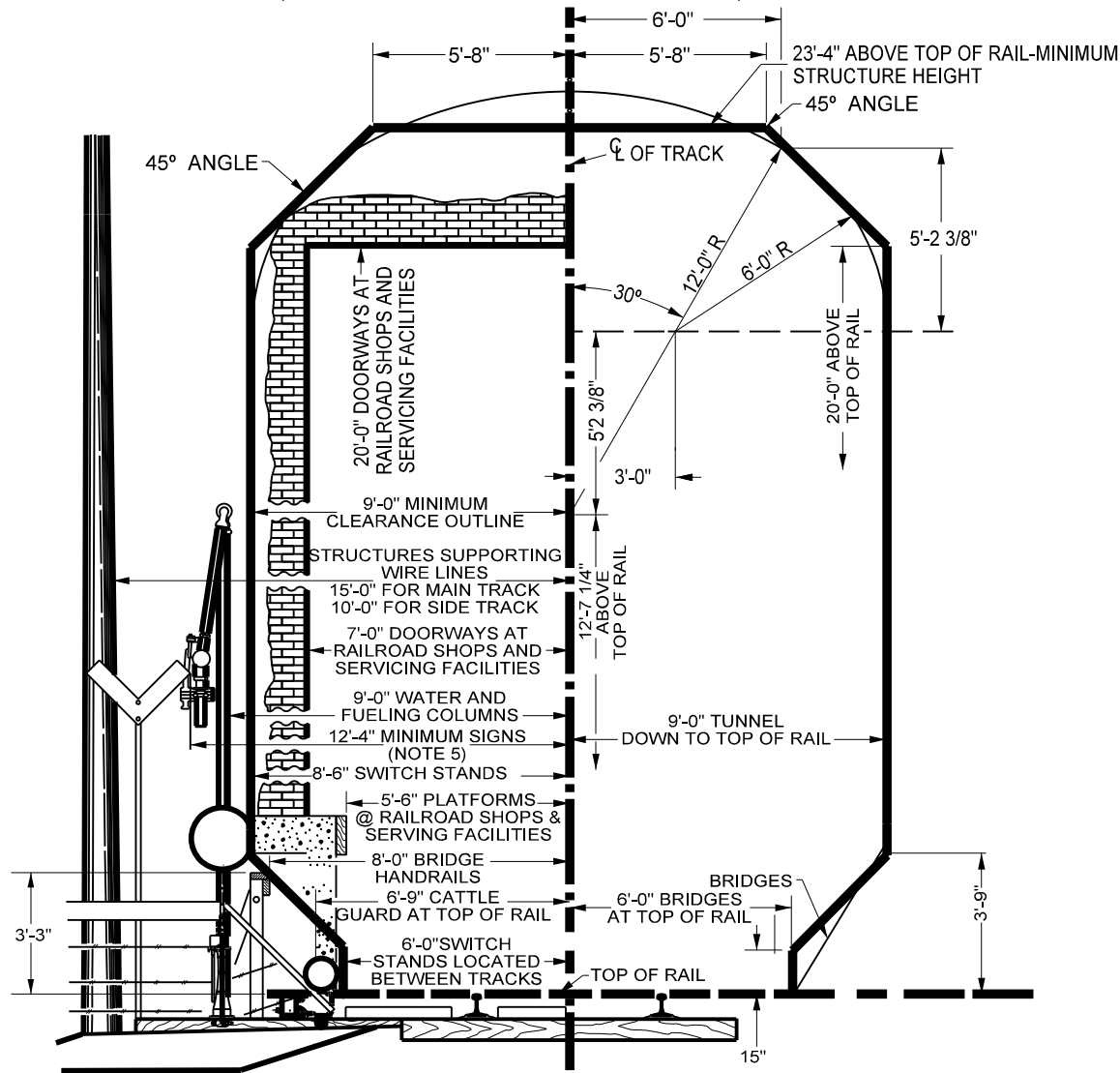


WIRE LINES WITH LESS THAN 750 VOLTS IN NON-ELECTRIFIED TERRITORY
27'-0" ABOVE TOP OF RAIL MINIMUM
(IN ELECTRIFIED TERRITORY—35'-0" ABOVE TOP OF RAIL MINIMUM)
(SEE M/W RULE 54.1 FOR HIGHER VOLTAGES)



THROUGH RAILROAD OWNED STRUCTURES AND FACILITIES

GENERAL NOTES (SEE PAGE 3 FOR TRACK NOTES):

1. ALL STRUCTURES OR FACILITIES NOT SHOWN MUST BE AT LEAST 9'-0" FROM THE CENTER LINE OF TRACK AND AT LEAST 23'-4" ABOVE THE TOP OF RAIL.
2. CLEARANCES FOR STRUCTURES OR FACILITIES ON CURVES MUST BE INCREASED Laterally ON EACH SIDE 1 1/2" PER EACH DEGREE OF CURVATURE, EXTENDING TO 80'-0" BEYOND THE END OF THE CURVE.
3. ANY FACILITIES FALLING WITHIN THESE DIMENSIONS WILL BE CONSIDERED IMPAIRED CLEARANCE, SUBJECT TO AGREEMENT, AND MUST BE APPROVED PRIOR TO CONSTRUCTION BY UNION PACIFIC RAILROAD'S OFFICE OF THE CHIEF ENGINEER OF DESIGN.
4. WHERE STATE OR LOCAL LAWS REQUIRE GREATER CLEARANCES THAN SHOWN HERE, THOSE LAWS SHALL PREVAIL.
5. SIGNS FOR INTERIOR MAIN TRACKS IN MULTIPLE MAIN TRACK TERRITORY WILL BE A MINIMUM OF 9'-0" FROM CENTER OF TRACK.

UNION PACIFIC RAILROAD ENGINEERING STANDARDS

STANDARD MINIMUM OPERATING CLEARANCES



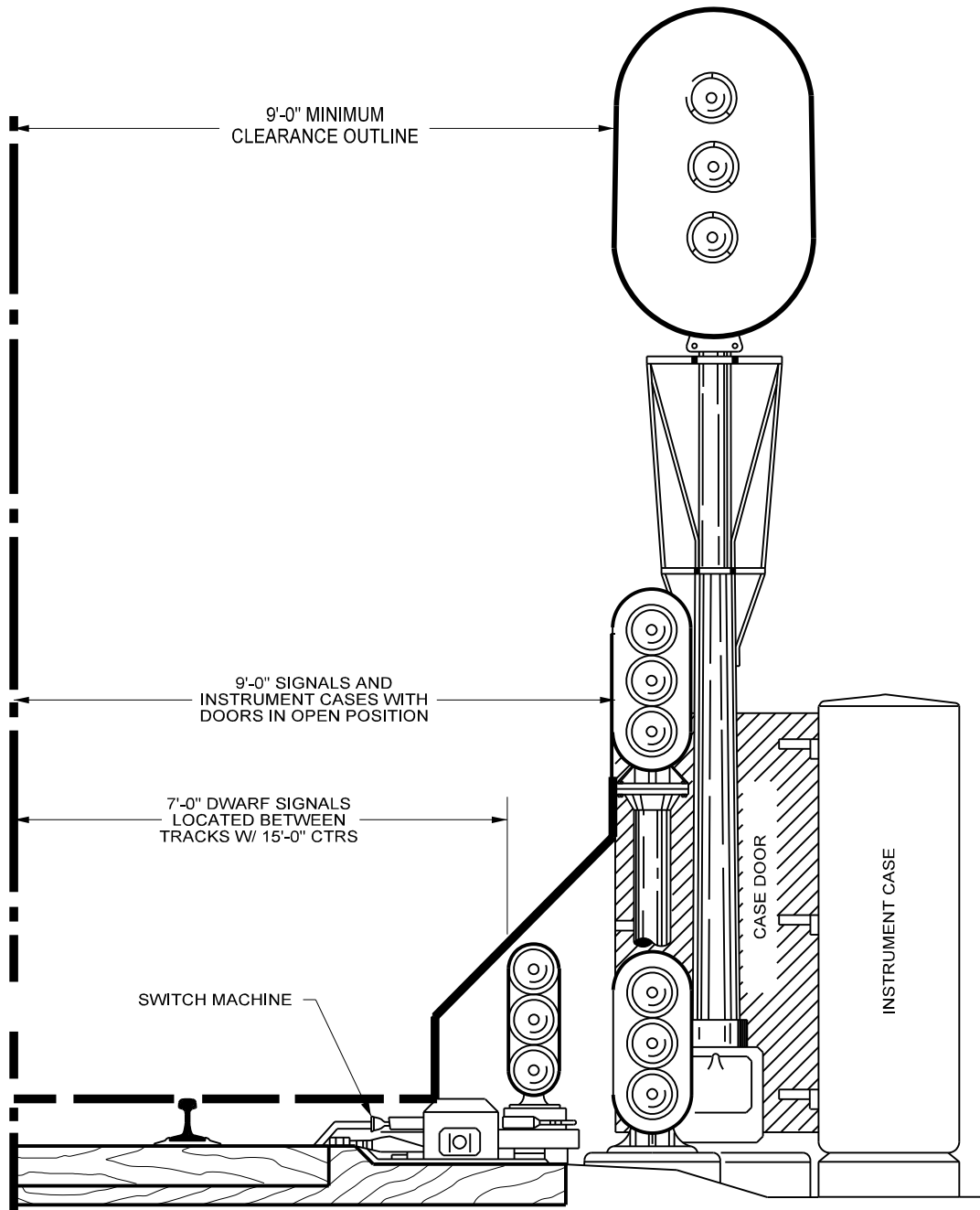
APPROVED: *Eric Dehinger*
VP ENGINEERING
ADOPTED: MAY 2, 1977
REVISED: NOV. 11, 2019
FILE NO.: 0038L

STD DWG

0038L

PAGE 1 OF 3

STD DWG
0038L
PAGE 1 OF 3



**SIGNAL STRUCTURES AND SWITCH MACHINES
THROUGH RAILROAD OWNED STRUCTURES**

**UNION PACIFIC RAILROAD
ENGINEERING STANDARDS**

**STANDARD MINIMUM
OPERATING CLEARANCES**

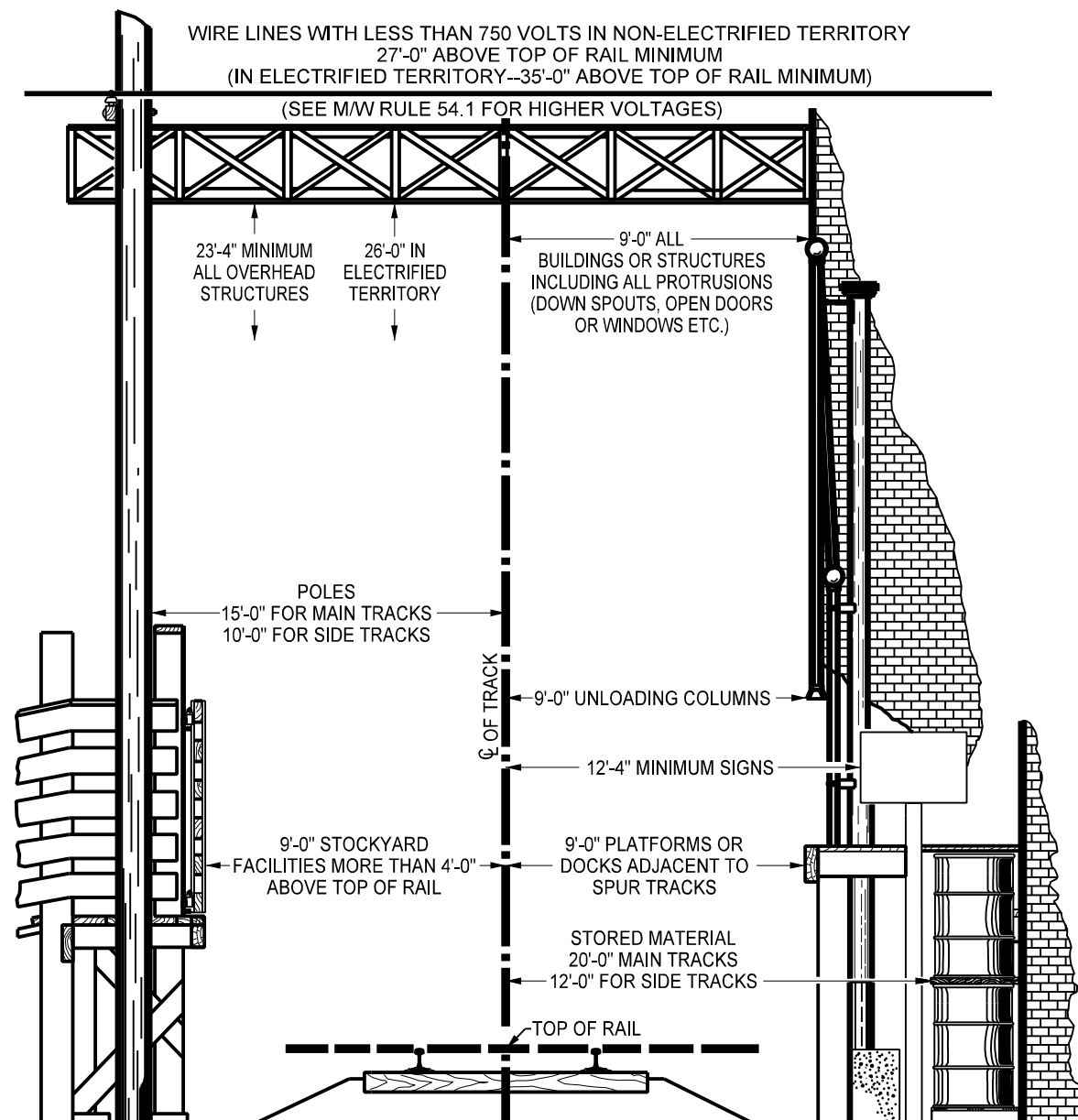


APPROVED: *Eric Rodriguez*
VP ENGINEERING
ADOPTED: MAY 2, 1977
REVISED: NOV. 11, 2019
FILE NO.: 0038L

STD DWG

0038L

PAGE 2 OF 3



TRACK NOTES (SEE PAGE 1 FOR GENERAL NOTES):

TRACK CENTERS:

1. TWO OR MORE MAIN TRACKS WILL BE A MINIMUM OF 15'-0" CENTER TO CENTER. SIDE TRACKS ADJACENT TO A MAIN TRACK WILL BE A MINIMUM OF 15'-0" CENTER TO CENTER.
2. ANY TWO OR MORE SIDE OR INDUSTRY TRACKS WILL BE A MINIMUM OF 14'-0" CENTER TO CENTER.
3. LADDER TRACKS AND ANY ADJACENT TRACK WILL BE A MINIMUM OF 20'-0" CENTER TO CENTER.
4. TEAM TRACKS IN PAIRS MAY BE A MINIMUM OF 13'-0" CENTER TO CENTER.
5. ELECTRIFIED TERRITORY REFERS TO TRACKS WHERE ELECTRIC LOCOMOTIVES OPERATE.
6. ALL VERTICAL CLEARANCES ARE MEASURED FROM THE TOP OF HIGHEST RAIL.
7. FOR INDUSTRY OWNED STRUCTURES AND FACILITIES, ALL HORIZONTAL CLEARANCES SHALL BE MAINTAINED FROM THE TOP OF RAIL.

SUPERELEVATION:

1. AN ADDITIONAL 4 1/4" HORIZONTAL CLEARANCE AT 20'-0" ABOVE TOP OF RAIL MUST BE ALLOWED ON THE LOW RAIL SIDE FOR EACH ONE INCH OF SUPERELEVATION TAPERING TO ZERO INCHES ADDITIONAL CLEARANCE AT THE TOP OF RAIL.

THROUGH INDUSTRY OWNED STRUCTURES AND FACILITIES

**UNION PACIFIC RAILROAD
ENGINEERING STANDARDS**

**STANDARD MINIMUM
OPERATING CLEARANCES**



APPROVED: *Eric Schringer*
VP ENGINEERING
ADOPTED: MAY 2, 1977
REVISED: NOV. 11, 2019
FILE NO.: 0038L

STD DWG

0038L

PAGE 3 OF 3