

BRACE

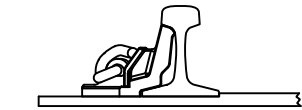
133LB ITEM NO. 550-2832
132, 136, 141LB ITEM NO. 550-2830



LOCKING PLATE
ITEM NO. 550-2831



RH PANDROL CLIP
ITEM NO. 503-6100



TYP. LV BOLTLESS ASS'Y.

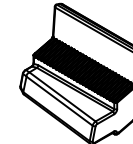
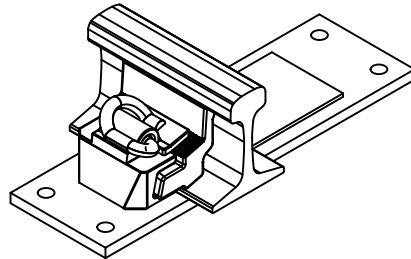
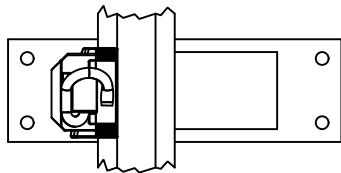
PARTS:

- 1-LV RETENTION BLOCK (WELDED TO PLATE)
- 1-LV LOCKING PLATE (SERRATED SHIM)
- 1-PANDROL RIGHT HAND CLIP #2055
- 1-LV BOLTLESS ADJUSTABLE BRACE

NOTE:

NOT TO BE USED IN CONJUNCTION WITH SWITCH POINT GUARD.

RACOR LV BOLTLESS ADJUSTABLE



BRACE

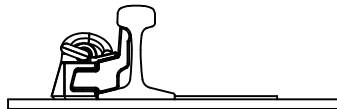
115LB ITEM NO. 520-0253
133LB ITEM NO. 520-0254
132, 136, 141LB ITEM NO. 520-0255



SERRATED WASHER
ITEM NO. 520-0252



RH PANDROL CLIP
ITEM NO. 503-6100



TYP. CLAMPTITE BOLTLESS ASS'Y.
115LB PLATE ASSEMBLY ITEM NO. 520-6547
133LB PLATE ASSEMBLY ITEM NO. 520-6500
136/141LB PLATE ASSEMBLY ITEM NO. 520-6545

PARTS:

- 1-CLAMPTITE WEDGE BLOCK (WELDED TO PLATE)
- 1-SERRATED WASHER
- 1-PANDROL RIGHT HAND CLIP #2055
- 1-CLAMPTITE ADJUSTABLE BRACE

**UNION PACIFIC RAILROAD
ENGINEERING STANDARDS**

**ADJUSTABLE RAIL
BRACES AND
ASSOCIATED PLATES**



ADOPTED: SEP. 21, 2020
REVISED:
FILE NO.: 1541

STD DWG

1541

PAGE 1 OF 2

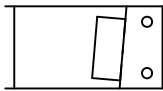
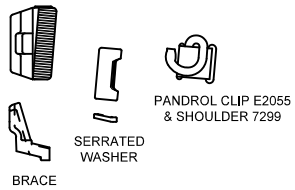
CLAMPTITE BOLTLESS ADJUSTABLE

PAGE 1 OF 2

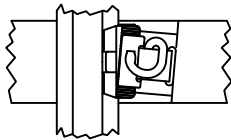
1541

STD DWG

BETHLEHEM BOLTLESS BRACE



TYP. PLATE

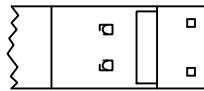
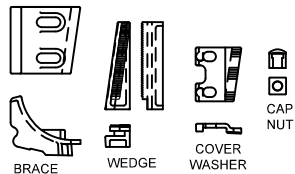


TYP. BOLTLESS ASS'Y.

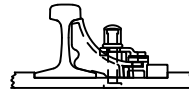
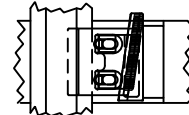
PARTS:
1-PANDROL WELD-ON SHOULDER 7299
1-PANDROL CLIP E2055
1-WASHER, SERRATED
1-BRACE

NOTE:
NOT TO BE USED IN CONJUNCTION
WITH SWITCH POINT GUARD. ORDER
AS NON-STOCK ITEM.

RACOR SECURITY ADJUSTABLE



TYP. PLATE

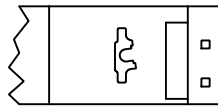
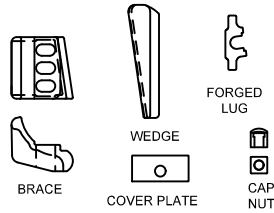


TYP. RACOR SECURITY ASS'Y.

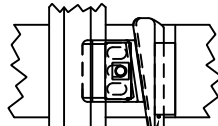
PARTS:
2-7/8" X 4 1/2" SQ HD BOLTS
2-7/8" CAP NUTS
2-7/8" SPRING WASHERS H/P
1-DI WEDGE
1-DI COVER WASHER
1-DI ADJUSTABLE SECURITY BRACE

NOTE:
WHEN USED IN CONJUNCTION WITH
SWITCH POINT GUARD, USE FM
SWITCH POINT GUARD, TYPE 6A PER
STD DWG 1351 WITH THIS BRACE.

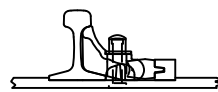
PETTIBONE TOP NOTCH



TYP. PLATE



COTTER PIN

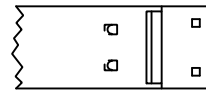
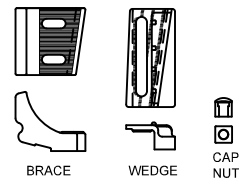


TYP. PETTIBONE ASS'Y.

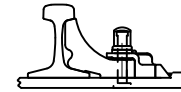
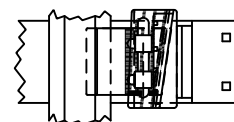
PARTS:
1-1" X 3 1/2" SQ HD BOLT
1-1 5/8" SQ. CAP NUT 1 3/4" HIGH
1-1" SPRING WASHER
1-COTTER PIN 1/4" X 2"
1-DI WEDGE FOR FM ADJ. BRACE
1-DI COVER PLATE
1-DI BRACE
1-FORGED LUG (WELDED TO PLATE)

NOTE:
WHEN USED IN CONJUNCTION WITH
SWITCH POINT GUARD, USE FM
SWITCH POINT GUARD, TYPE 2 PER
STD DWG 1354 WITH THIS BRACE.

CONLEY ADJUSTABLE



TYP. PLATE

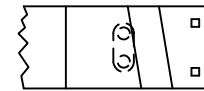
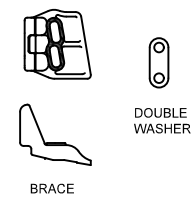


TYP. CONLEY ASS'Y.

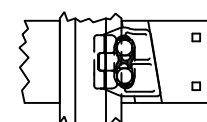
PARTS:
1-7/8" X 4 1/2" SQ HD BOLT
1-CAP NUT
1-7/8" SPRING WASHER
1-1/4" X 2" X 6" FLAT WASHER
1-MALL. WEDGE
1-MALL. COVER PLATE
1-MALL. BRACE

NOTE:
WHEN USED IN CONJUNCTION WITH
SWITCH POINT GUARD, USE FM
SWITCH POINT GUARD, TYPE 7 PER
STD DWG 1352 WITH THIS BRACE.

TYPICAL A.R.E.A. ADJUSTABLE



TYP. PLATE

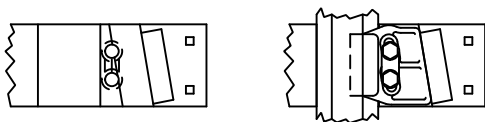


TYP. A.R.E.A. ASS'Y.

PARTS:
2-7/8" X 3 1/2" SQ. HI-HD BOLTS
2-7/8" SPRING WASHERS
1-DI DOUBLE NUT W/ THREADS
1-DI DOUBLE WASHER, SERRATED
1-DI ADJUSTABLE BRACE

NOTE:
WHEN USED IN CONJUNCTION WITH
SWITCH POINT GUARD, USE FM
SWITCH POINT GUARD, TYPE 5 WITH
THIS BRACE (NO STD DWG). ORDER
AS NON-STOCK ITEM.

NORTRAK ADJUSTABLE



TYP. PLATE

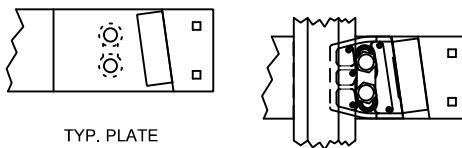


TYP. NORTRAK ASS'Y.

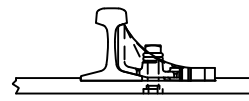
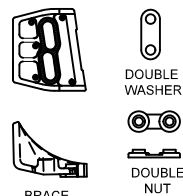
PARTS:
2-7/8" X 3.3/4" HEX HEAD BOLTS
2-7/8" SPRING WASHERS
M9 DOUBLE NUT
M10 DOUBLE WASHER

NOTE:
FM SWITCH POINT GUARD NOT
CURRENTLY MANUFACTURED
TO MATE TO THIS ADJ. BRACE

RACOR ADJUSTABLE



TYP. PLATE



MODIFIED A.R.E.A. ASS'Y.
U.P. STD.

PARTS:
2-7/8" X 3 1/2" HEX
HD BOLTS
2-7/8" SPRING WASHERS
1-DI DOUBLE NUT W/
THREADS
1-DI DOUBLE WASHER,
SERRATED
1-DI ADJUSTABLE
BRACE

NOTE:
WHEN USED IN CONJUNCTION
WITH SWITCH POINT GUARD,
USE FM SWITCH POINT GUARD,
TYPE 6B PER STD DWG 1353
WITH THIS BRACE.

NOTES:
1. ALL ITEMS ON THIS PAGE ARE FOR MAINTENANCE
ONLY.

**UNION PACIFIC RAILROAD
ENGINEERING STANDARDS**

**ADJUSTABLE RAIL
BRACES AND
ASSOCIATED PLATES**



ADOPTED: SEP. 21, 2020
REVISED:
FILE NO.: 1541

STD DWG

1541

PAGE 2 OF 2